

MONTHLY MEMBERSHIP PROGRESS REPORT

LOCATION INDIA

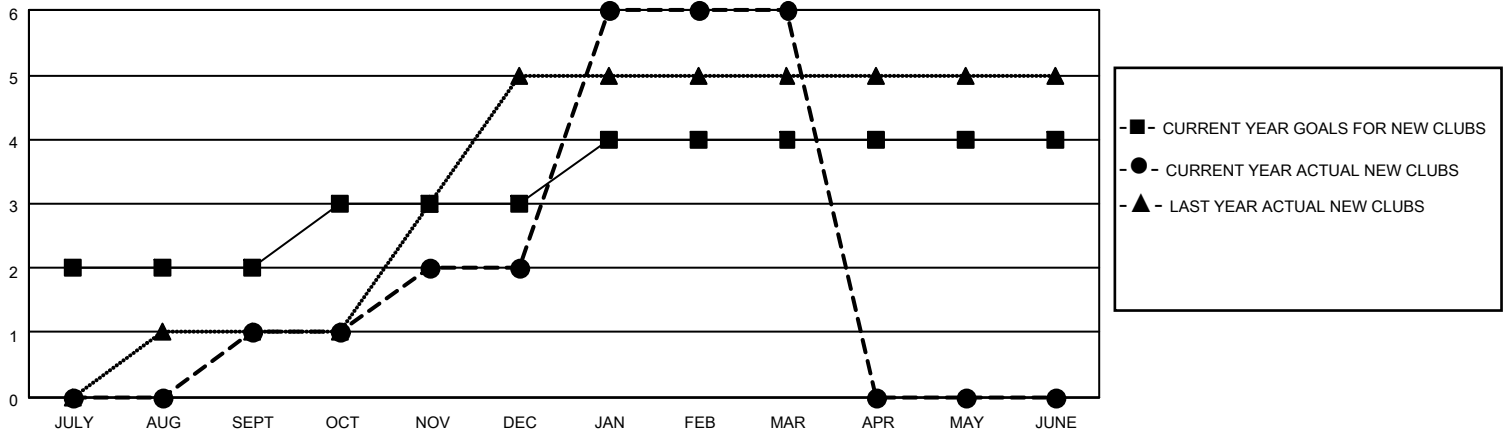
District 322 D

Results as of: 3/31/2022

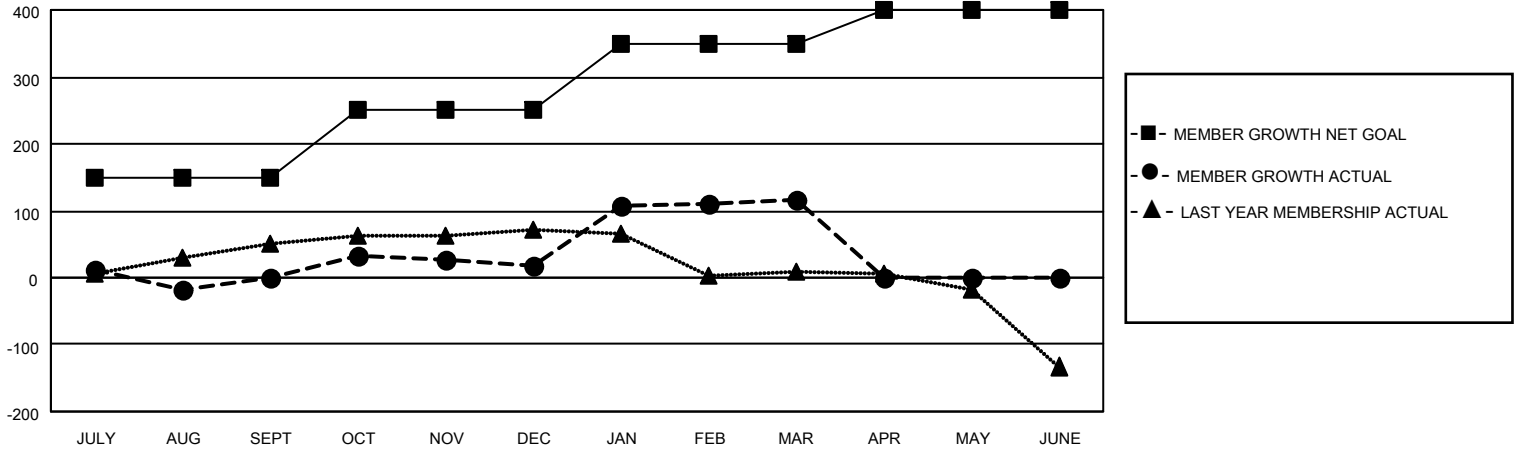
Clubs			
RESULTS FOR 2021-2022			
QUARTER	NEW CLUB GOAL	NEW CLUBS	DROPPED CLUBS
JULY/AUG/SEPT	2	1	3
OCT/NOV/DEC	1	1	2
JAN/FEB/MAR	1	4	0
APR/MAY/JUNE	0	0	0

Members			
RESULTS FOR 2021-2022			
QUARTER	MEMBER GROWTH NET GOAL	MEMBER GROWTH ACTUAL	DROPPED MEMBERS ACTUAL (including transfers)
JULY/AUG/SEPT	150	76	75
OCT/NOV/DEC	100	111	92
JAN/FEB/MAR	100	120	19
APR/MAY/JUNE	50	0	0

GOALS AND ACTUAL NEW CLUBS CUMULATIVE



GOALS AND ACTUAL MEMBERS CUMULATIVE



DROPPED CLUBS: 5

43 CLUBS OF 85 ADDED 1 OR MORE NEW MEMBERS

GENDER DISTRIBUTION

MALE	2,150 (70.89%)
FEMALE	883 (29.11%)
NON BINARY	0 (0.00%)
PREFER NOT TO ANSWER	0 (0.00%)

DROPPED MEMBERS

[CLICK HERE FOR CUMULATIVE MEMBERSHIP DATA](#)

DECEASED	13
CLUB CANCELLED	80
OTHER	93
TOTAL	186

TOTAL FAMILY UNIT MEMBERS 1,238

FAMILY MEMBERS PAYING HALF DUES 692